

MONTHLY MEMBERSHIP PROGRESS REPORT

LOCATION ENGLAND

District 105CW

Results as of: 4/30/2023

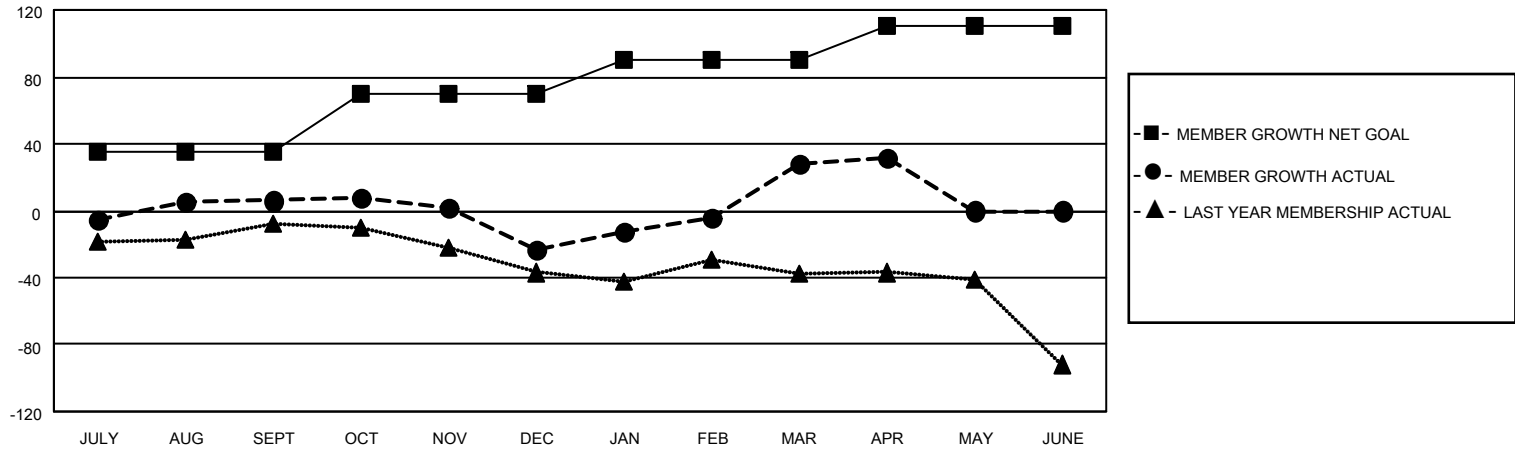
Clubs			
RESULTS FOR 2022-2023			
QUARTER	NEW CLUB GOAL	NEW CLUBS	DROPPED CLUBS
JULY/AUG/SEPT	0	0	0
OCT/NOV/DEC	0	0	0
JAN/FEB/MAR	1	0	0
APR/MAY/JUNE	1	0	0

Members			
RESULTS FOR 2022-2023			
QUARTER	MEMBER GROWTH NET GOAL	MEMBER GROWTH ACTUAL	DROPPED MEMBERS ACTUAL (including transfers)
JULY/AUG/SEPT	35	54	46
OCT/NOV/DEC	35	33	60
JAN/FEB/MAR	20	96	37
APR/MAY/JUNE	20	13	7

GOALS AND ACTUAL NEW CLUBS CUMULATIVE



GOALS AND ACTUAL MEMBERS CUMULATIVE



DROPPED CLUBS: 0

57 CLUBS OF 92 ADDED 1 OR MORE NEW MEMBERS

GENDER DISTRIBUTION

MALE	1,157 (70.98%)
FEMALE	472 (28.96%)
NON BINARY	1 (0.06%)
PREFER NOT TO ANSWER	0 (0.00%)

DROPPED MEMBERS

[CLICK HERE FOR CUMULATIVE MEMBERSHIP DATA](#)

DECEASED	25
CLUB CANCELLED	0
OTHER	125
TOTAL	150

TOTAL FAMILY UNIT MEMBERS 206

FAMILY MEMBERS PAYING HALF DUES 105